

COSMOS

QUICKSTART GUIDE

COSMOS by GENKI



Preset

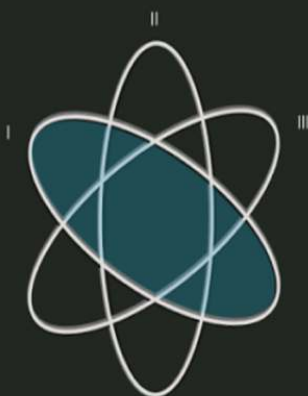


ARPEGGIATOR  

MODE



OCTAVES



RATE



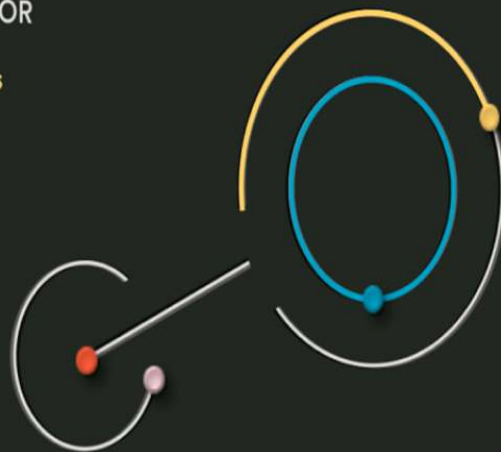
OSCILLATOR


HARMONICS

tone


sub

noise



ADSR I 



ADSR II 




UFO I 

FREQUENCY

SHAPE



UFO II 

FREQUENCY

SHAPE



FILTER

FREQUEN

RESONAN

DAMP

DRIVE

SPACE

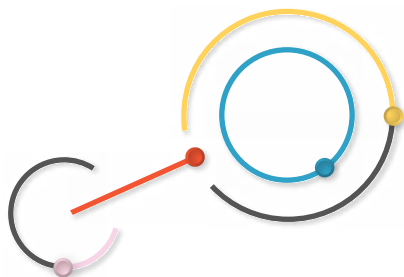
REVERB

ECHO

Contents

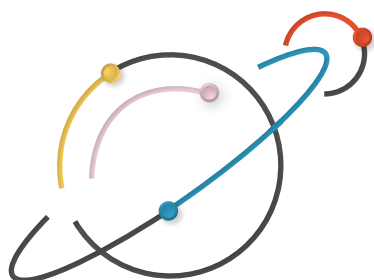
Key features	1
Compatibility	2
Installation	3
Activation	4
Presets	5–7
Hold and sync	8
Patching UFOs and Envelopes	9–11
Mapping in Cosmos	12
Updates	13–14
Keyboard shortcuts	15
Uninstall	16

Key features



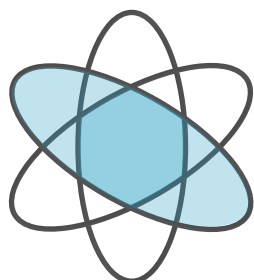
Oscillators

Eight-voice variable shape virtual analog oscillators with sync, FM, cross-fading velvet noise and sub.



Filter

Innovative virtual analog filter with independent damp, resonance and drive.



Arpeggiator

Galaxy arpeggiator with rate, octaves and four unique modes.



UFOs and Envelopes

Patch anything with two UFOs (frequency and shape) and envelopes.



Effects

Lush reverb and echo with variable feedback, damp, time and mix.

Compatibility

Plugin formats

VST3, AU.

Platforms supported



Mac OS 10.11 and up including Catalina, Big Sur and Mac M1 compatibility (through Rosetta translation).



PC Windows 7 and up.

DAWs supported

Ableton Live, Logic Pro, FL Studio, Cubase, Nuendo, Reaper and any other major DAW software on the market supporting VST3 and AU plugins.

Installation

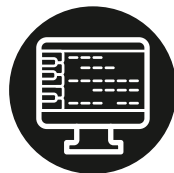
- 1 After purchase you receive a download link in email, to a macOS version and another one for Windows.



- 2 Download either the Mac OS or Windows version and unzip the file. Double click the unzipped file and follow the setup instructions.

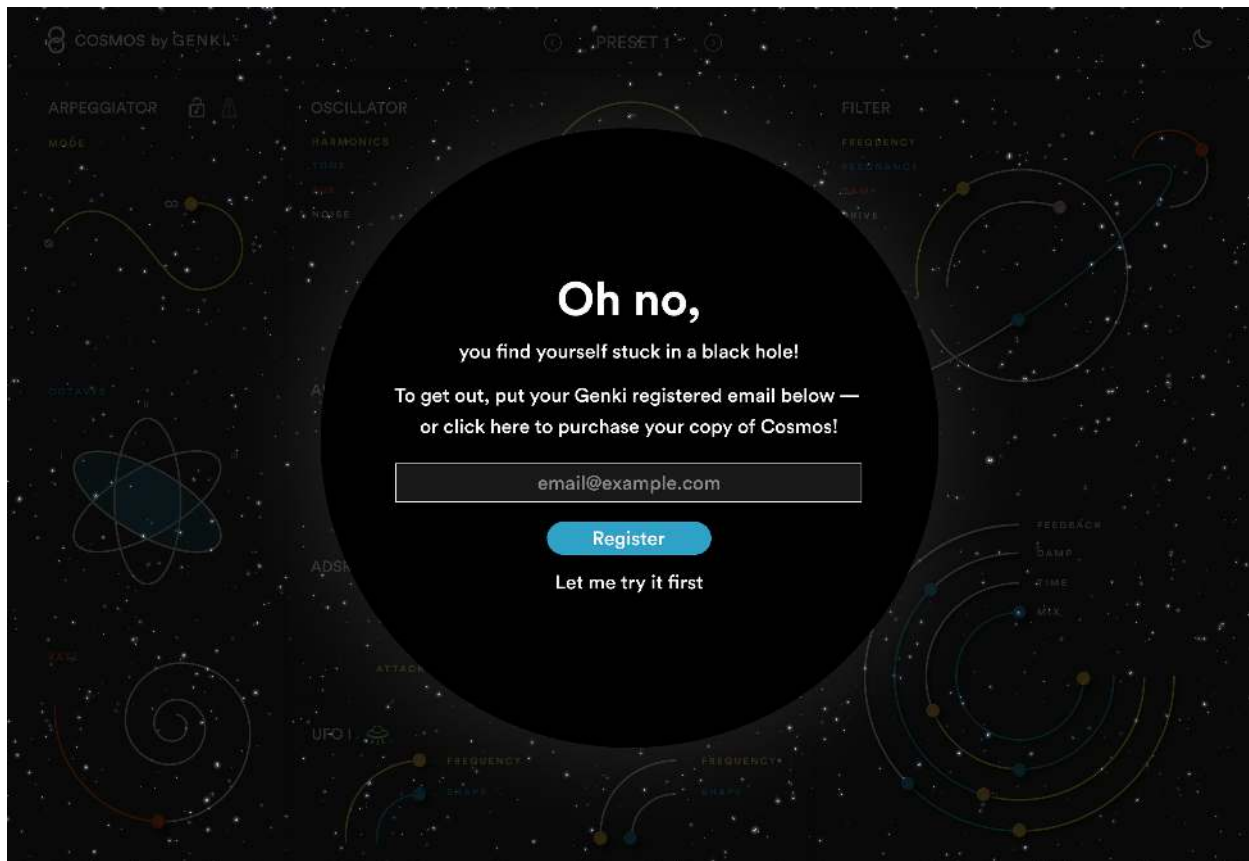


- 3 After you've installed Cosmos to your computer it should show up in your DAW. Based on the DAW you use you might have to scan for new plugins.



Activation

Activate Cosmos by entering the email you used to purchase the software. You'll be prompted with the registration window after 3 minutes of use. If you have any problems activating, please email wave@genkiinstruments.com



Presets

Cosmos comes equipped with presets to get you started on your sonic journey. The synth is designed to be an inspirational machine so creating your own sounds is extremely easy.

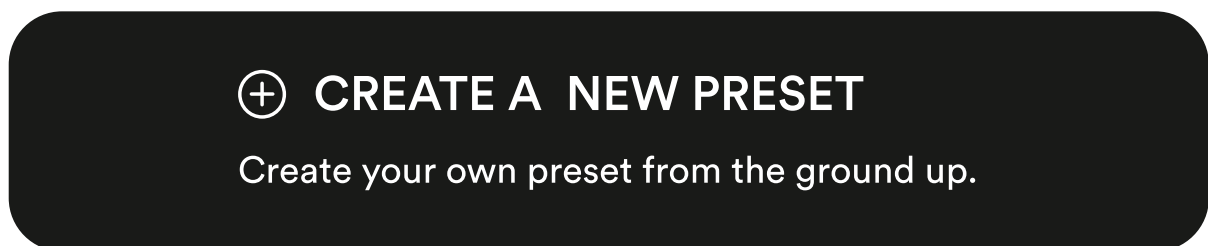
Access the Preset Overview

To access the Preset Overview press the name of the preset you're in. To close the Preset Overview window press the preset name again.



Create new preset

To create a new preset press CREATE NEW PRESET. You'll start with a clean slate and can create your own preset from the ground up.



Rename a preset

To change the name of a preset double click the Preset name and type in a new one. Click anywhere with the mouse to confirm the new name or hit Enter.



Save preset

When you change the state of a preset an asterisk symbol (*) is displayed beside the preset name. To save the state of the preset, and therefore overwrite the former state press **SAVE PRESET**.

 **SAVE PRESET**

Save any unsaved changes to this preset.

Save as a new preset

If you don't want to overwrite a preset you can create a new one with your new state by pressing **SAVE AS NEW PRESET**.

 **SAVE AS A NEW PRESET**

Build a new preset from the current one.

Import presets

If you have presets saved to your computer you can import them by pressing **IMPORT PRESETS**. This action will add the imported presets to your current library.

 **IMPORT PRESETS**

Import presets from a previous session. Note that this will overwrite the current bank.

Export presets

To save presets for later or for sharing with another Cosmos user press EXPORT PRESETS.

EXPORT PRESETS

Export the current preset bank for safe keeping or sharing with your friends.

Deleting presets

To delete presets from your library press the X behind the preset name in the Preset Overview.

Note that you can not delete stock presets.

New preset



Hold and sync

Hold

When enabled the Hold function holds all notes you press on your keyboard.



Enabled: Lock is closed.



Disabled: Lock is open.

Sync

When enabled, the Arpeggiator will sync to the host and it's rate will be a subdivision of the current BPM.



Enabled: Metronome icon is white.



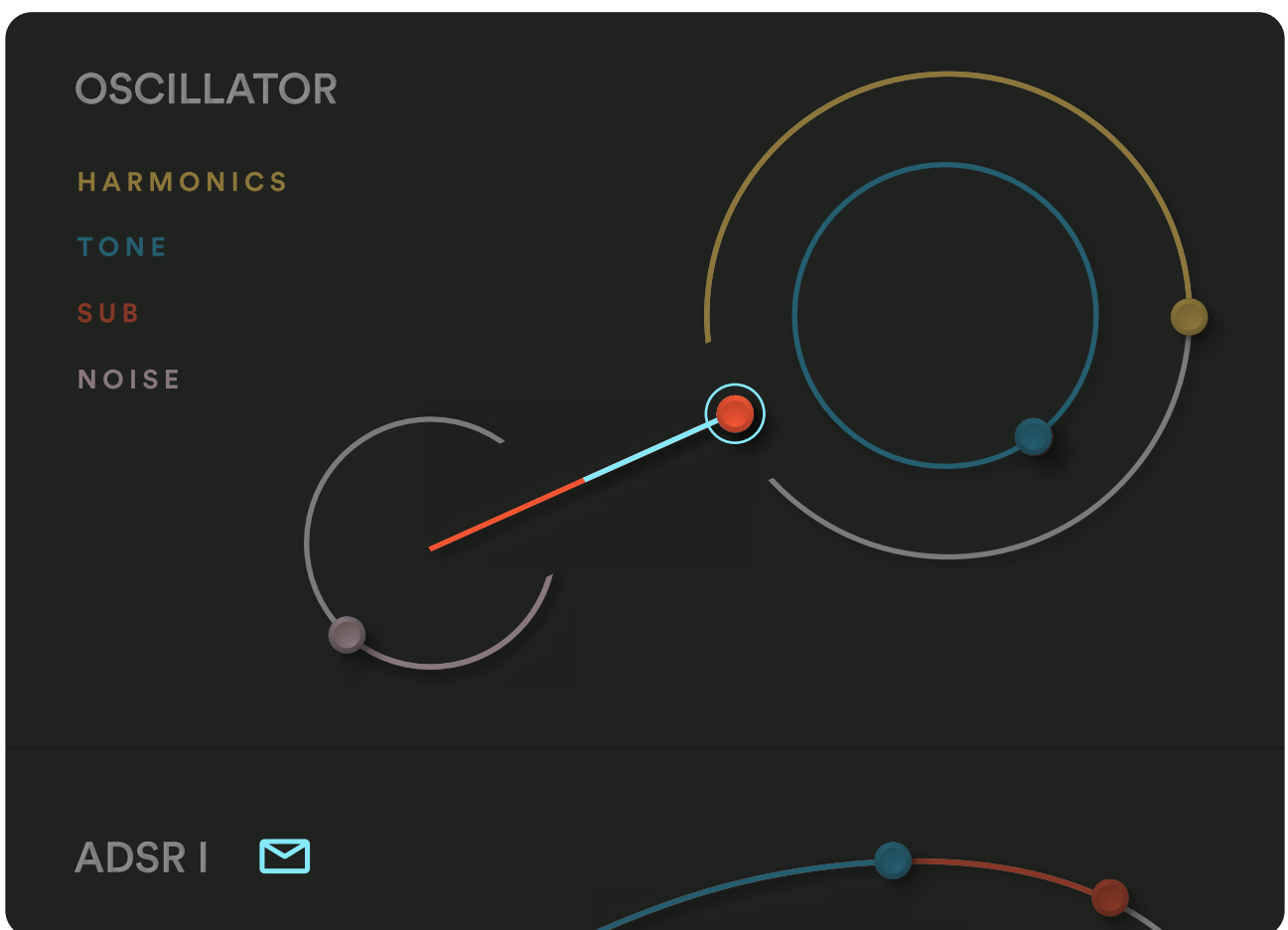
Disabled: Metronome is grayed out.

Patching UFOs and Envelopes

You can patch the UFOs (frequency and shape) and Envelopes to any parameter in Cosmos.

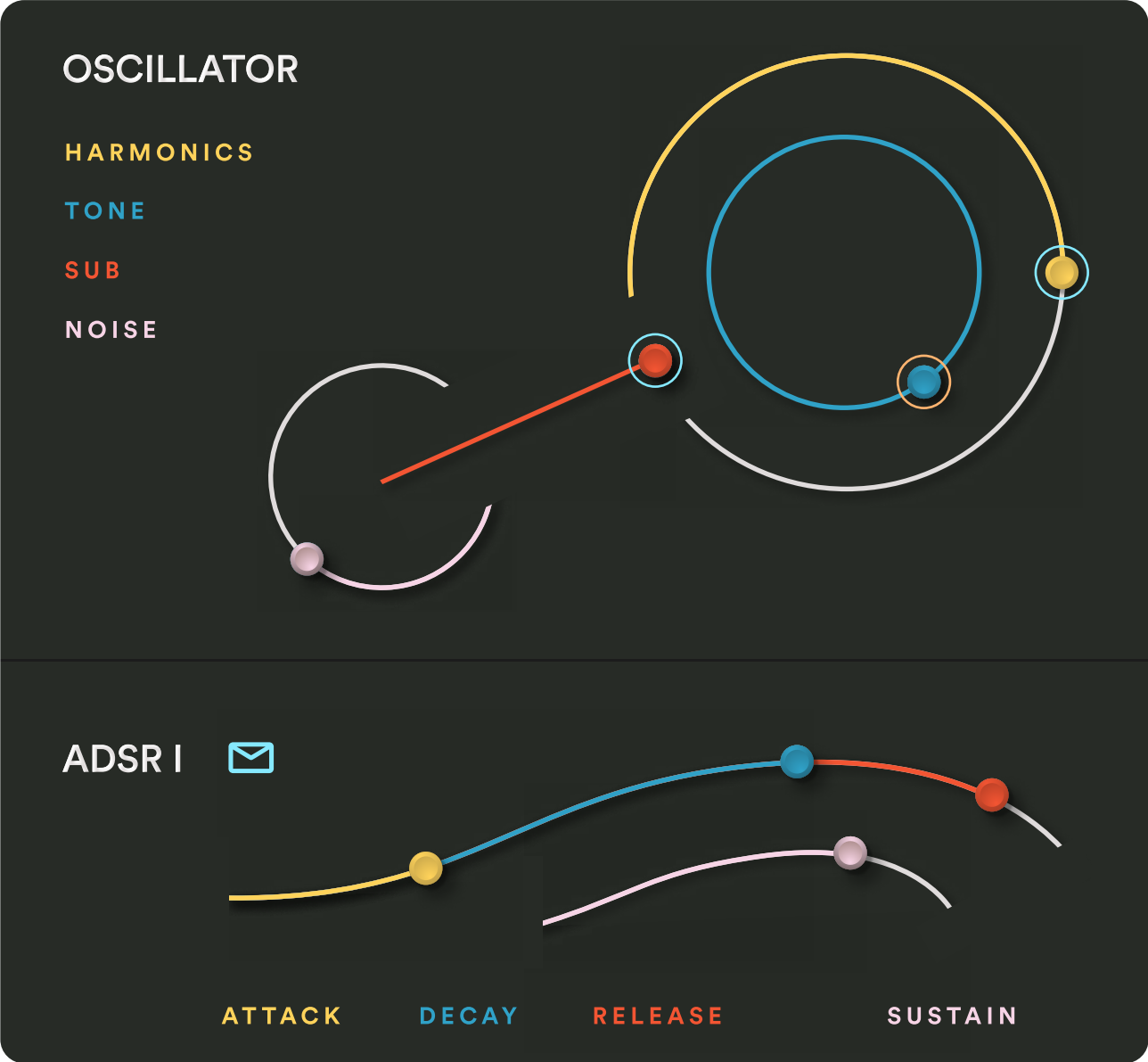
Patching

Simply press an Envelope/UFO icon, then drag the parameter you want to affect. How far you drag the parameter affects the range of the modulation.



Patch Overview

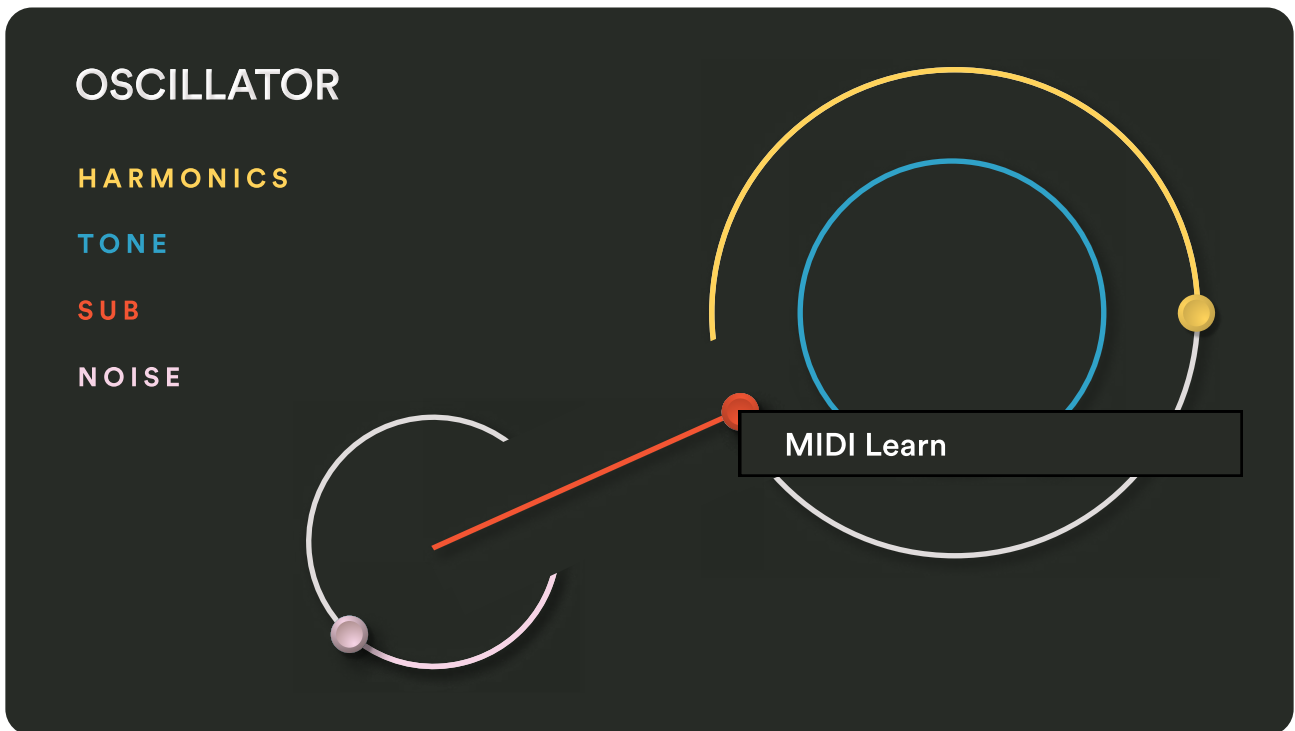
To see which parameters you've patched hover over one of the Envelope/UFO icons. The patches are color coded so you can easily see which parameters are being affected by what.



Mapping in Cosmos

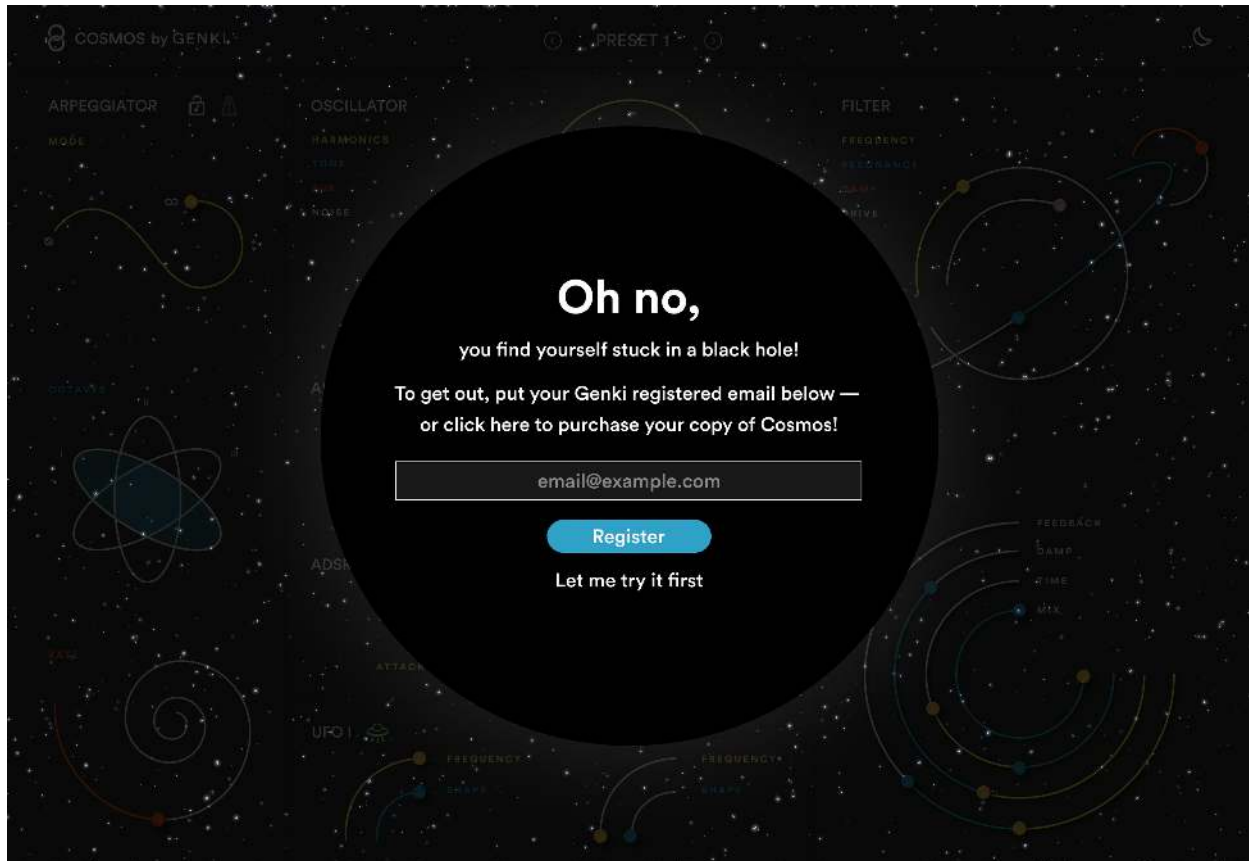
You can MIDI map all parameters in Cosmos within your DAW.

Simply right click the parameter you want to map and select "MIDI Learn."



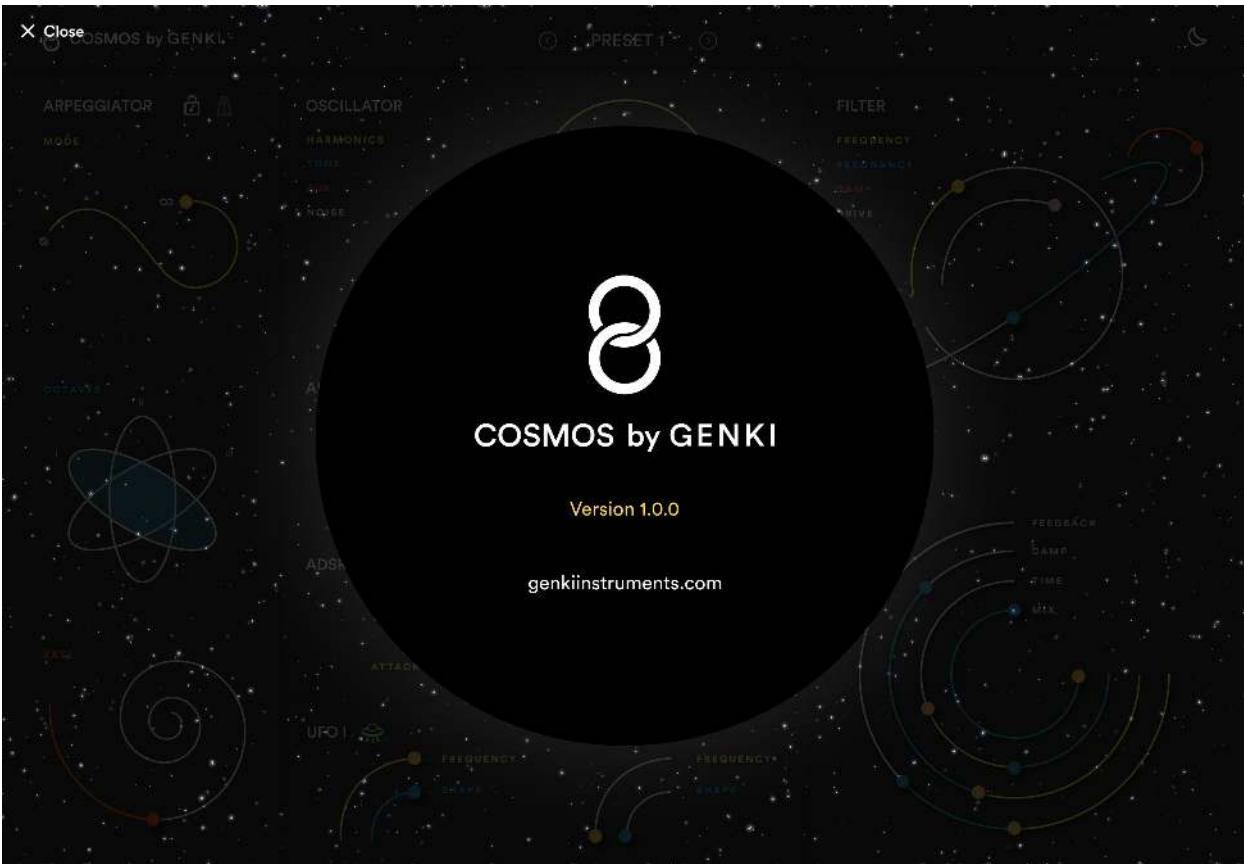
Updates

When a new update of Cosmos is out you'll get prompted with an update window.



You can download it by pressing Download now, skip the update by pressing Skip this version or get a reminder by pressing Remind me later.

If you want to see which version of Cosmos you have installed you can press the Cosmos by Genki logo in the top left corner.



Keyboard shortcuts

The following keyboard shortcuts are incorporated into Cosmos.

Keyboard shortcuts

Cmd/ctrl + Z	→	Undo
Cmd/ctrl + shift + Z	→	Redo
Cmd/ctrl + S	→	Save preset
Cmd/ctrl + shift + S	→	Save as new preset
Cmd/ctrl + 1	→	Toggle envelope 1
Cmd/ctrl + 2	→	Toggle envelope 2
Cmd/ctrl + 3	→	Toggle UFO 1
Cmd/ctrl + 4	→	Toggle UFO 2
Right arrow	→	Next preset
Left arrow	→	Previous preset

Uninstall

To uninstall Cosmos from your computer do the following:

Mac OS

AU Go to **/Library/Audio/Plug-ins/Components/** and delete the file called *Cosmos.component*.

VST3 Go to **/Library/Audio/Plug-ins/VST3/** and delete the file called *Cosmos.VST3*.

Windows

VST3 Go to **\Program Files\Common Files\VST3** and delete the file called *Cosmos.VST3*.

Disconnecting a patch

To disconnect a patch simply right click on the parameter you want to disconnect and select **Disconnect From Envelope/UFO**.

If you want to disconnect all modulation for all parameters select **Disconnect From All**.

Similarly you can right click the **Envelope/UFO** icons to disconnect.

